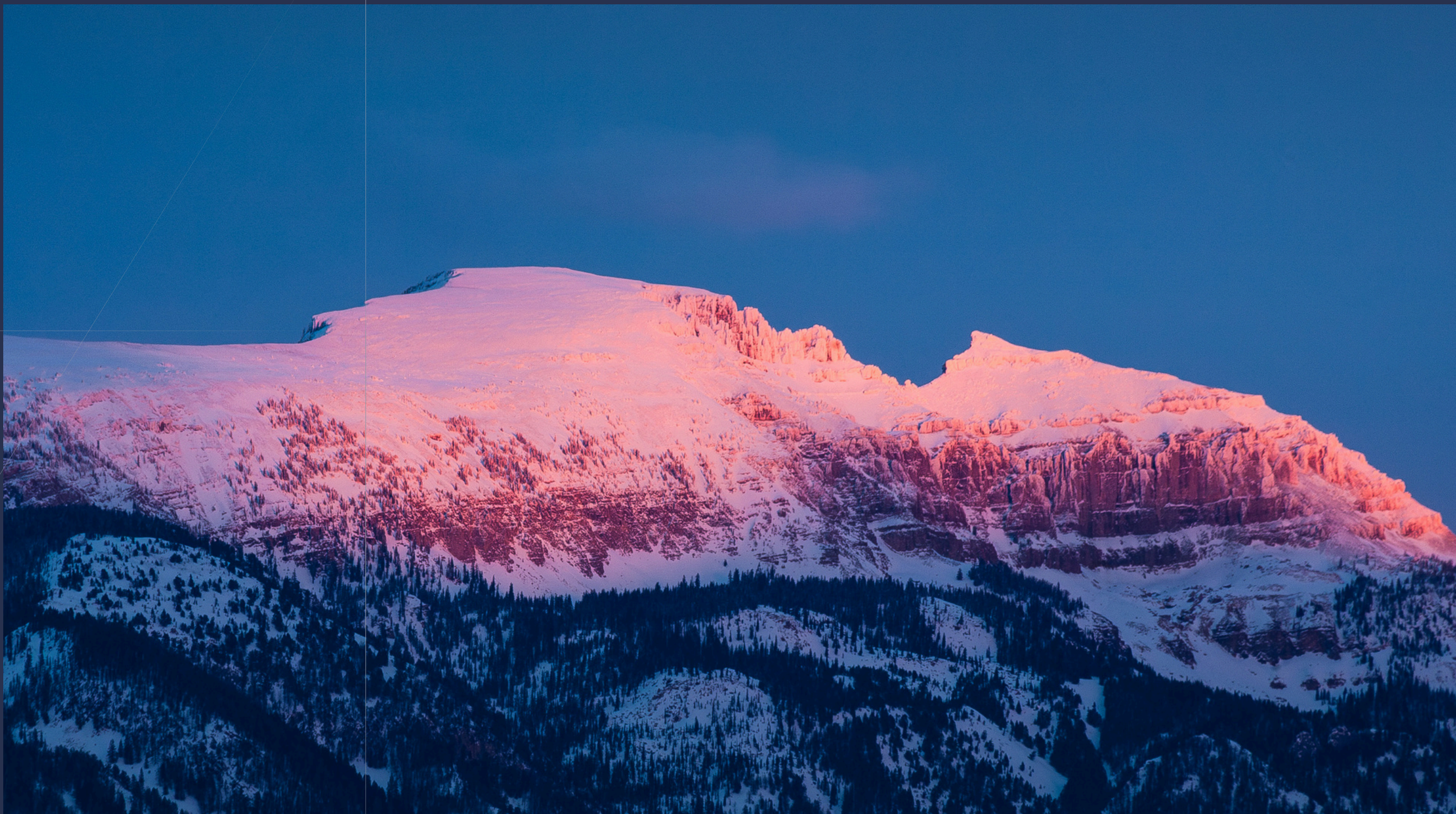


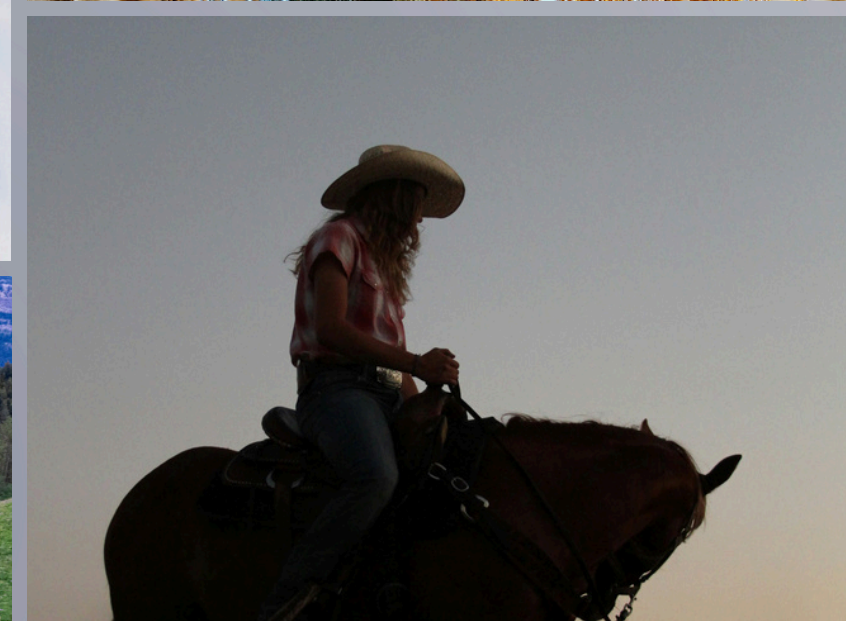
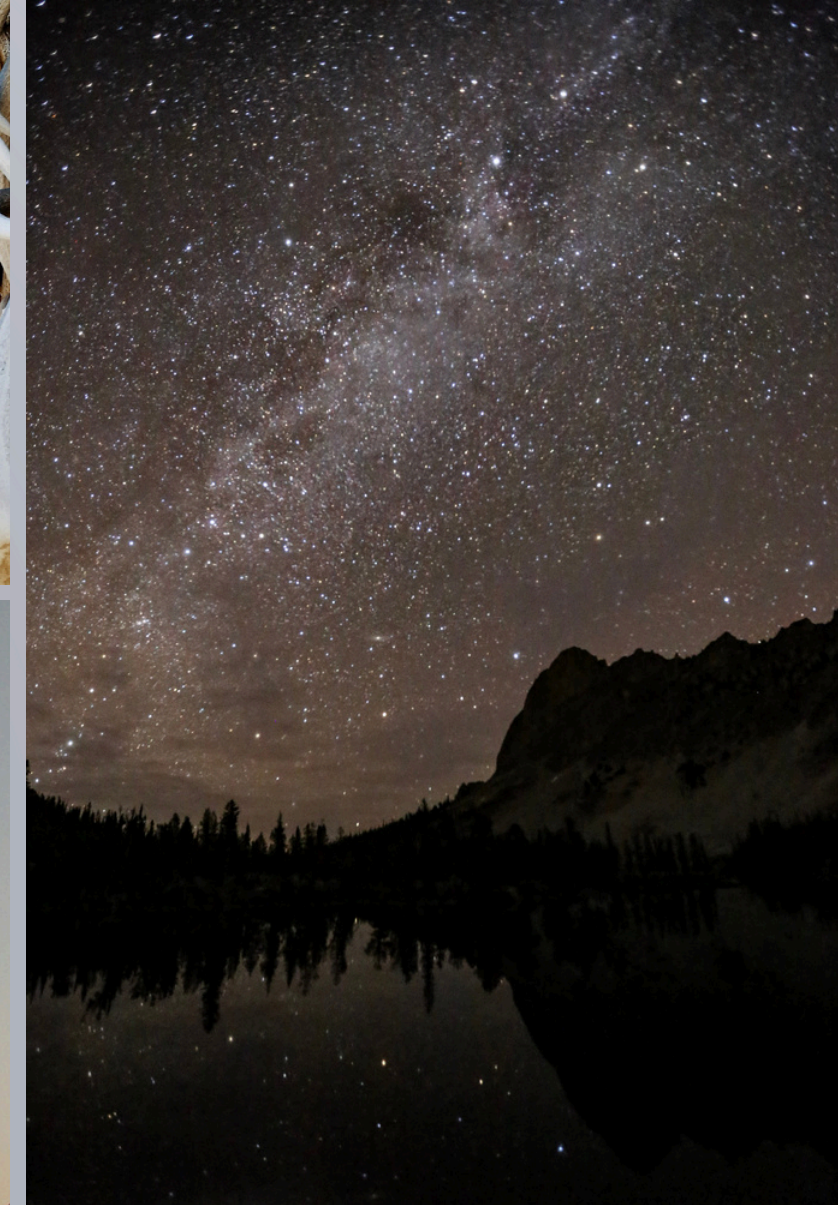
# THE SKY HOUSE

















# Elevating luxury

Nestled amidst Jackson Hole's majestic mountains, an architectural dream was born. Inspired by European and Japanese aesthetics, The Sky House is a sanctuary where architecture harmonizes with nature. This exceptional house, perched upon a gentle slope, offers a symphony of elegance and tranquility, commanding unobstructed views of the iconic Sleeping Indian from every vantage point.

Stepping inside, one is greeted by an atmosphere of understated luxury and warmth. The interior design, inspired by elegant city living, incorporates elements of mountain chic with modern sophistication. Nearly every wall and ceiling is adorned with European Oak, while large picture windows frame panoramic views of the surrounding peaks, inviting sunlight to dance across the interior of the refined home.



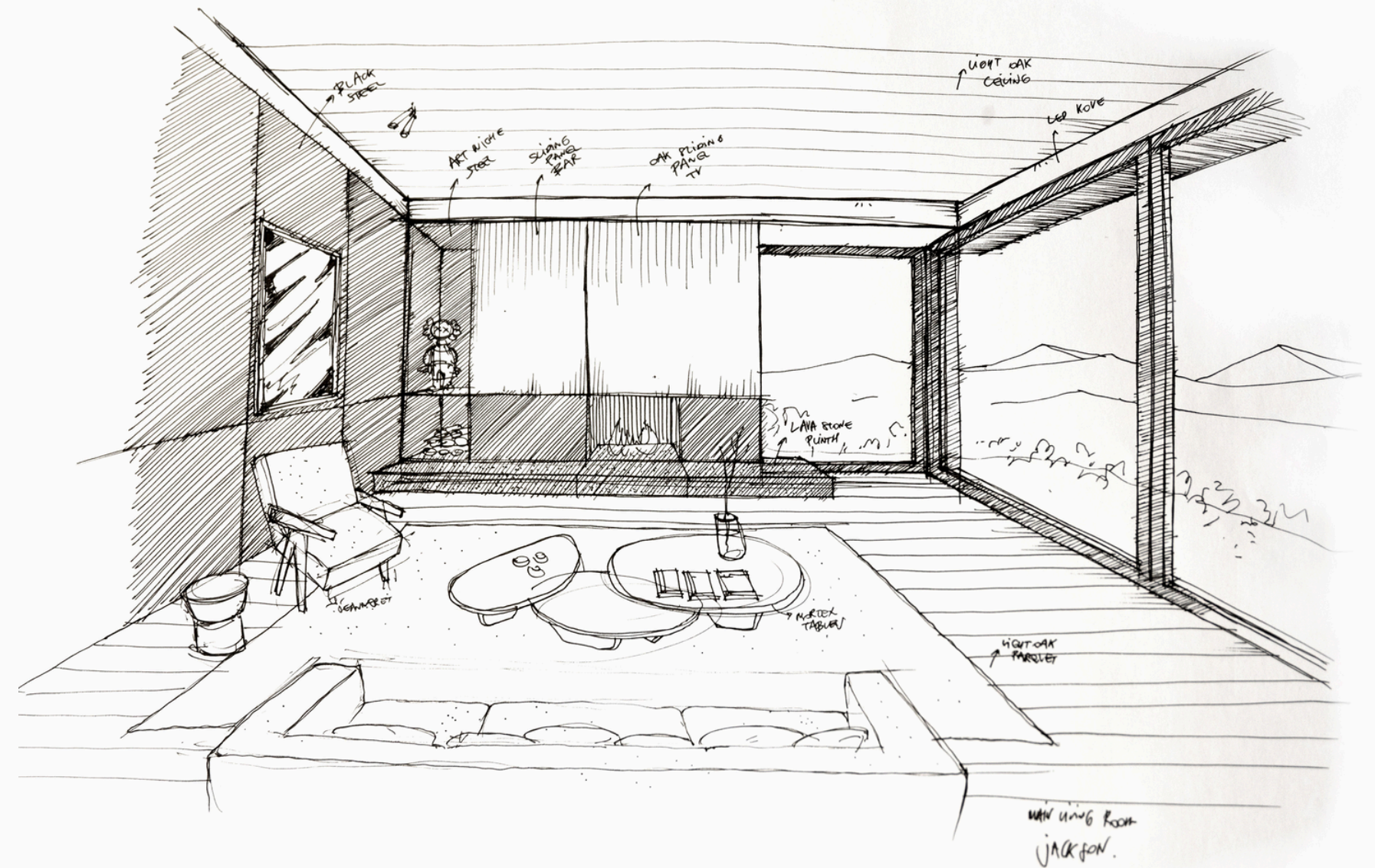






# Every detail matters

In every detail, this exceptional house in Jackson Hole epitomizes the essence of mountain living—a harmonious blend of natural beauty, refined elegance, and boundless adventure, where every moment is a celebration of the extraordinary landscape that surrounds it.





# Welcome home



Area	W Gros Ventre Butte
Acres	6.41
Views	Sleeping Indian, Spring Gulch Ranch
Architect	Dieter Vander Velpen, Kt814
Builder	Bontecou Construction
Year Built	Est Completion Summer 2024
Habitable Area	6,574 Sqft Hardscape 2,513 Sqft
One Structure	Main Wing & Guest Wing
Garages	Main & Guest Wing
Bedrooms	5 Ensuite





Built with the enduring elegance of European Oak, the interior architecture of The Sky House seamlessly blends Japanese serenity with modern comfort. Each detail exudes luxury, from the custom Japanese-style soaking tubs to the custom Italian Millwork throughout.

Dornbracht fixtures adorn the bathrooms, complementing the hand-picked Italian travertine that graces the surfaces. In the heart of the home, Miele appliances elevate culinary experiences, while the ambiance is set with full-house custom audio, security and automation. With every corner exuding elegance, this residence embodies a haven of sophistication.









Living in Jackson Hole, Wyoming, is an unparalleled experience that captures the essence of the American West. Nestled within the embrace of the majestic Teton Range, this idyllic valley is a haven for outdoor enthusiasts and nature lovers alike.

From the moment one awakens to the sight of the sun-kissed peaks towering overhead to the tranquil evenings spent beneath a blanket of stars, life in Jackson Hole is a daily reminder of the awe-inspiring beauty that surrounds it.











## Finishes and Millwork

Canova | Italian made custom oak paneling, interior doors, built-in closets, bookshelves, beds, and desks, with integrated pulls and LED lighting throughout

Madera | European oak engineered wood ceilings

Customized Vasari plaster walls

Lutron Sivoia roller shades and bespoke Verilin Belgium made linen drapes

Il Granito | (Custom made in Italy) “Romano Classico” travertine countertops and fully bespoke sinks

## Tile and Flooring

Il Granito “Pietra di Vesuvius” stone tile floors

Il Granito “Romano Classico” travertine wall tile in bathrooms and showers

Madera European oak wide plank engineered wood floors

## Appliances

Wolf 36” dual fuel range, wolf steam oven, Subzero 36” refrigerator and freezer, Fisher and Paykel 24” drawer-style dishwashers, Wolf wine refrigerator in pantry

Speed Queen Washer and two (2) dryers in Main House laundry room

GE stacked Washer and Dryer in guest wing

Subzero refrigerator drawer in guest wing

## Specialties

Sky Terrace with customized Nespa 7’ x 14’ tiled spa

Symmetry hydraulic drive elevator with white oak interior paneling

Steam shower in guest-wing spa bath

Italian made Lualdi shower doors throughout

Stuv (Belgium) and Element 4 (Dutch) custom indoor gas fireplaces

Montana Firepits (US) Olympic steel fire table on rear terrace (67”)

## Exterior Windows and Doors

Smartwin (Germany) solar triple-pane windows and lift-slide doors

## Lighting and Controls

Control4 House Automation for HVAC, Lighting, Security and AV

Kreon (Belgium) recessed fixtures

Lutron Homeworks QSX lighting controls with Lutron Homeworks Palladium keypads

LED cove lighting throughout home

## Audio Visual and Security

James Small Aperture in-ceiling speakers throughout home

Triad and Sony amplifiers

Sony Bravia OLED televisions

Araknis Routers and networking

Full security system with door contacts, glass break sensors, motion and flood sensors, 8 exterior security cameras

Vesda aspirating smoke detection system

## HVAC

7-zone forced air heating and cooling, 10-zone radiant heat ,Tekmar controls

Custom white oak grilles in ceilings

## Plumbing

Dornbracht, California Faucets, and Graff faucets and plumbing throughout with maximum water pressure and output capacity

Japanese Toto wall-mounted toilets

Studio Loho (Belgium) bespoke clay bathtub in Master

Unique Wood (Poland) bespoke oak bathtub in guest suite



*“IN EVERY PROJECT,  
WE AIM FOR A PERFECT  
SYMBIOSIS BETWEEN THE  
CLIENT, THE HOUSE AND  
OUR DESIGN.”*

— Dieter Vander Velpen

Dieter Vander Velpen is more than just an architect; he is a visionary whose designs transcend the ordinary, leaving an indelible mark on the world of architecture and interior design.

With a keen eye for detail and an unwavering commitment to excellence, Vander Velpen has earned a reputation as a master of his craft. He is revered for his ability to create spaces that are both timeless and transformative.





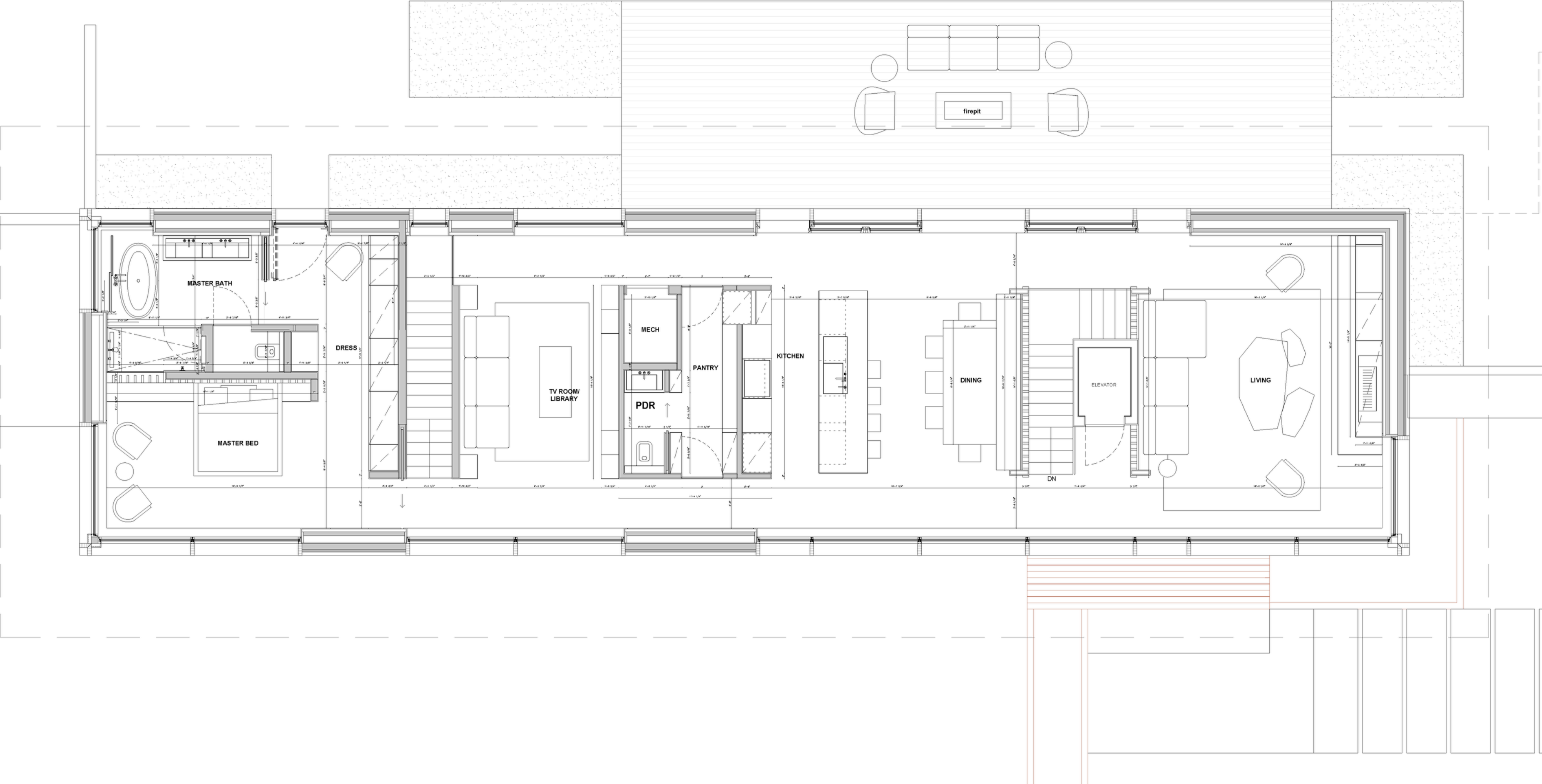






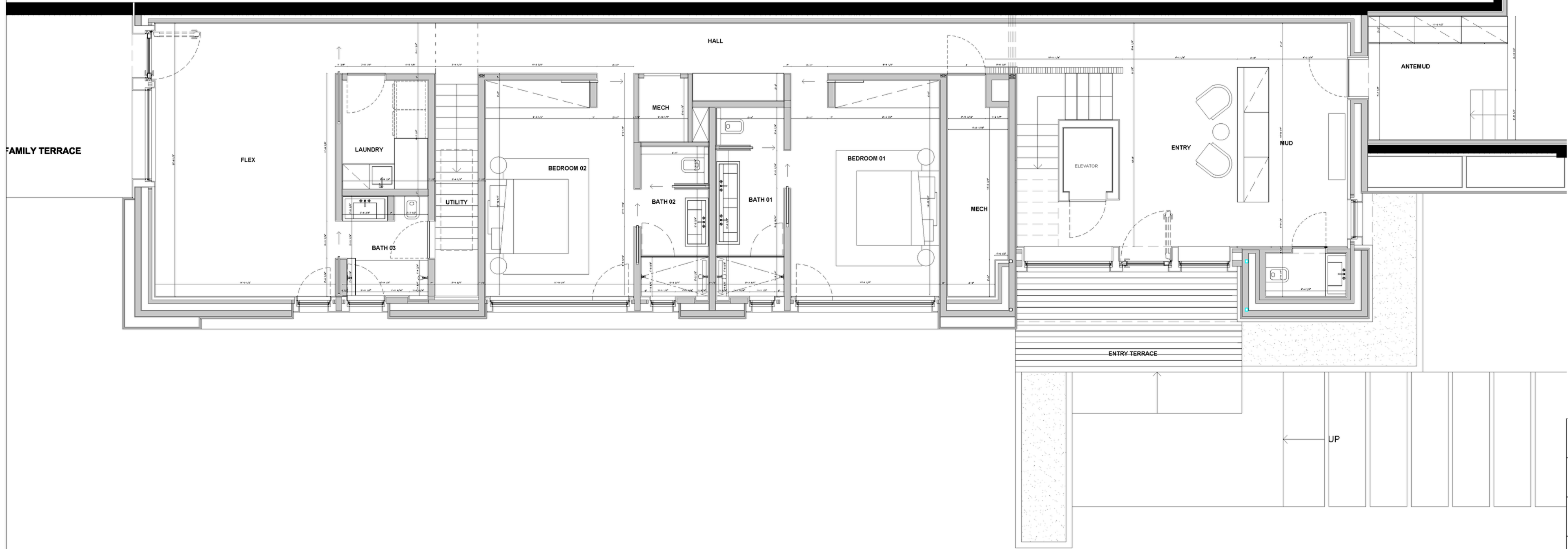


# Main Wing - 2nd Floor



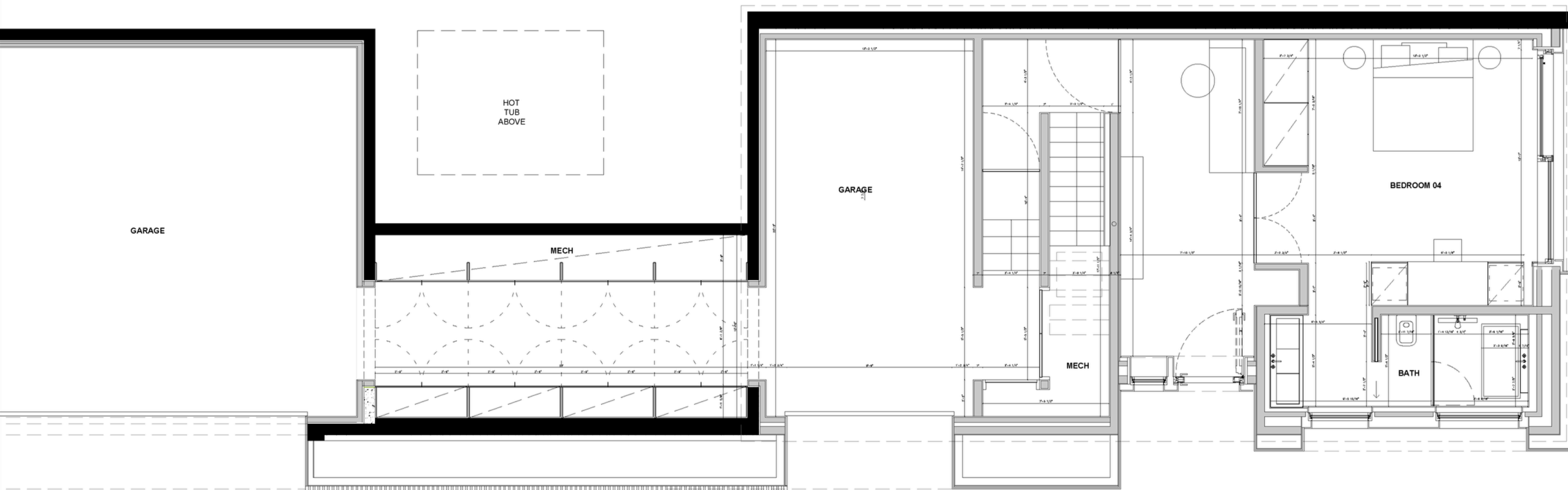


# Main Wing - 1st Floor



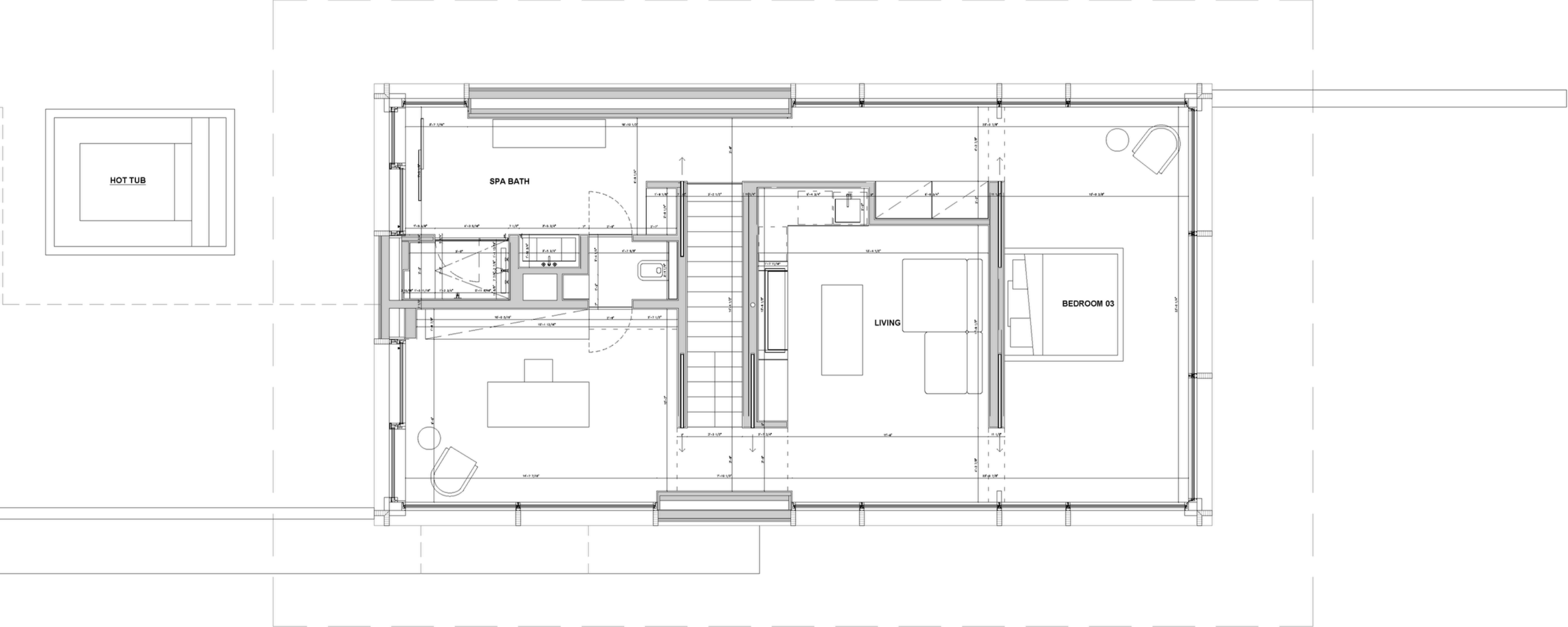


# Guest Wing - 1st Floor





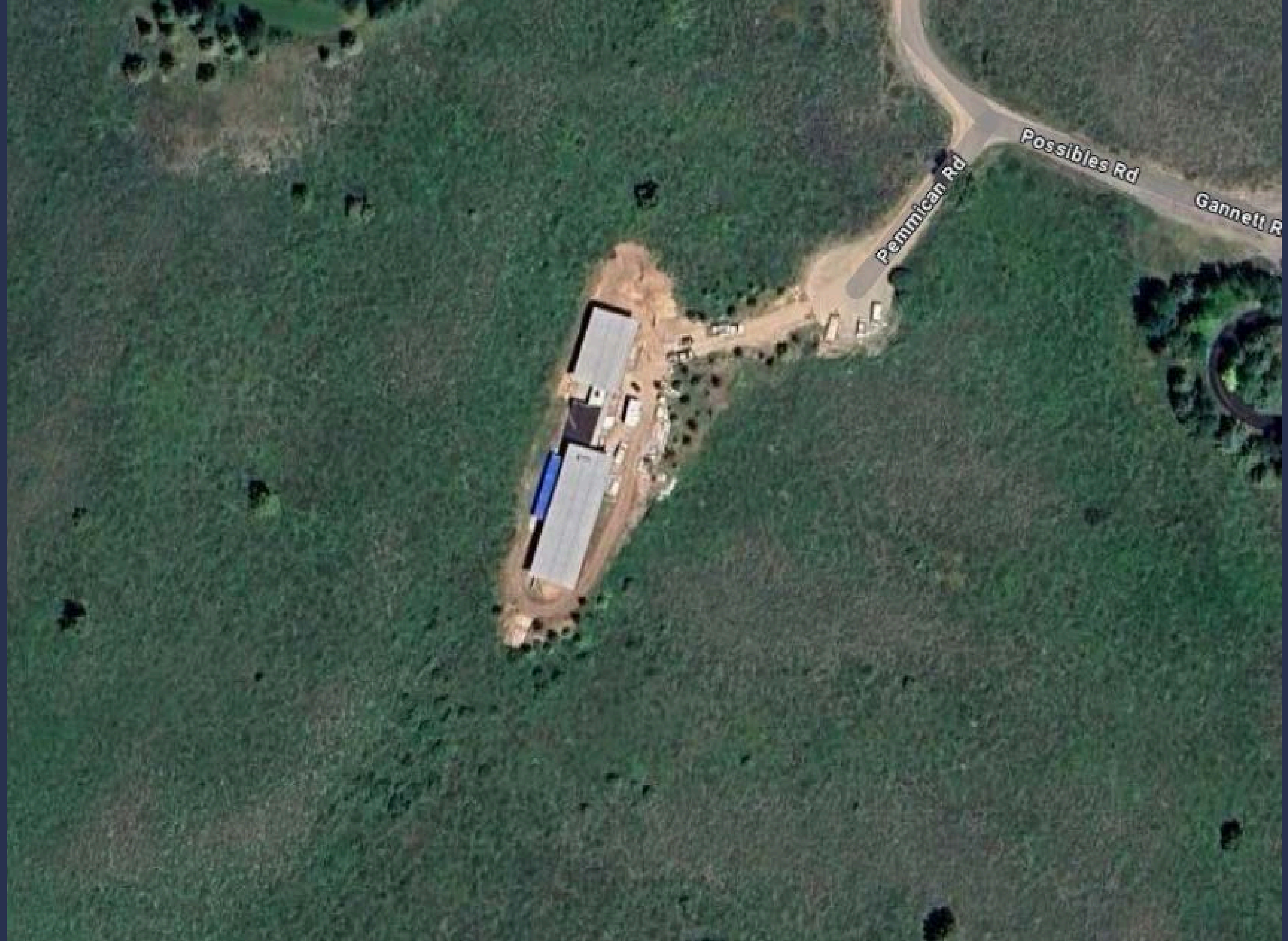
# Guest Wing - 2nd Floor

















# THE SKY HOUSE

## CONTACT INFORMATION

Cindee George

307-690-3996

[team@jhreteam.com](mailto:team@jhreteam.com)

[www.jhreteam.com](http://www.jhreteam.com)

